

(19)



Europäisches Patentamt
European Patent Office
Office européen des brevets



(11)

EP 0 884 417 A3

(12)

EUROPEAN PATENT APPLICATION

(88) Date of publication A3:
21.07.1999 Bulletin 1999/29

(51) Int Cl.⁶: **E01F 9/04**

(43) Date of publication A2:
16.12.1998 Bulletin 1998/51

(21) Application number: **98500141.1**

(22) Date of filing: **12.06.1998**

(84) Designated Contracting States:
**AT BE CH CY DE DK ES FI FR GB GR IE IT LI LU
MC NL PT SE**
Designated Extension States:
AL LT LV MK RO SI

(71) Applicant: **"Pinturas Jaque, S.L."**
Murcia (ES)

(72) Inventor: **"Pinturas Jaque, S.L."**
Murcia (ES)

(30) Priority: **13.06.1997 ES 9701808 U**

(54) **Non-slip plate**

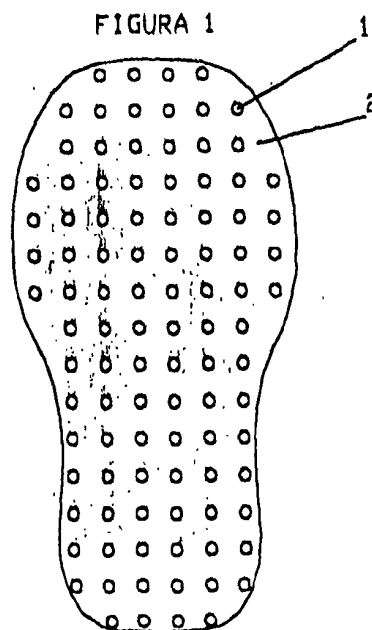
(57) Invention hereby refers to plates with vague shapes, with the objective of Marking on the Road symbols, principally oriented to zebra crossing and road symbols.

It is placed in situ, applying over the ground a resin compatible with plate's sharper and next placing the plate body with the no-slip buttons towards outside.

Composure and manufacture are made of moulds with shape, in this case, footprint, where synthetic resins are placed and in the protuberances or buttons is placed the non-slip material, principal characteristic of the product.

The product has also a call sign and foresight character, thanks to colour, little projection in their composition and their non-slip component.

It is the only product that complies the double characteristic relating with non-slip required and natural light visibility (European normative 14 EN 1436).



EP 0 884 417 A3



European Patent
Office

EUROPEAN SEARCH REPORT

Application Number
EP 98 50 0141

| DOCUMENTS CONSIDERED TO BE RELEVANT | | | |
|--|---|--|--|
| Category | Citation of document with indication, where appropriate, of relevant passages | Relevant to claim | CLASSIFICATION OF THE APPLICATION (Int.Cl.6) |
| Y | DE 672 556 C (O. BRUNNER) * the whole document * | 1-3 | E01F9/04 |
| Y | FR 2 597 896 A (GREGGORY SA) 30 October 1987 * page 1, line 25 - line 31 * * page 2, line 30 - page 3, line 21; figures * | 1-3 | |
| A | DE 43 14 240 A (A. PÜNTENER) 25 November 1993 * column 4, line 31 - line 59 * * column 8, line 24 - line 42; figure 4 * | 1-3 | |
| | | | TECHNICAL FIELDS SEARCHED (Int.Cl.6) |
| | | | E01F E04F |
| The present search report has been drawn up for all claims | | | |
| Place of search THE HAGUE | | Date of completion of the search 28 May 1999 | Examiner Verveer, D |
| CATEGORY OF CITED DOCUMENTS X : particularly relevant if taken alone Y : particularly relevant if combined with another document of the same category A : technological background O : non-written disclosure P : intermediate document | | T : theory or principle underlying the invention E : earlier patent document, but published on, or after the filing date D : document cited in the application L : document cited for other reasons & : member of the same patent family, corresponding document | |

EPO FORM 1503 03/82 (P04C01)

**ANNEX TO THE EUROPEAN SEARCH REPORT
ON EUROPEAN PATENT APPLICATION NO.**

EP 98 50 0141

This annex lists the patent family members relating to the patent documents cited in the above-mentioned European search report.
The members are as contained in the European Patent Office EDP file on
The European Patent Office is in no way liable for these particulars which are merely given for the purpose of information.

28-05-1999

| Patent document cited in search report | | Publication date | Patent family member(s) | Publication date |
|---|---|---------------------|----------------------------|---------------------|
| DE 672556 | C | | NONE | |
| FR 2597896 | A | 30-10-1987 | NONE | |
| DE 4314240 | A | 25-11-1993 | CH 683274 A | 15-02-1994 |

EPO FORM P0459

For more details about this annex : see Official Journal of the European Patent Office, No. 12/82