

(19)



Europäisches Patentamt

European Patent Office

Office européen des brevets



(11)

EP 1 029 444 A1

(12)

EUROPEAN PATENT APPLICATION

published in accordance with Art. 158(3) EPC

(43) Date of publication:

23.08.2000 Bulletin 2000/34

(51) Int. Cl.⁷: **A01G 9/10**

(21) Application number: **99938398.7**

(86) International application number:

PCT/ES99/00245

(22) Date of filing: **30.07.1999**

(87) International publication number:

WO 00/07429 (17.02.2000 Gazette 2000/07)

(84) Designated Contracting States:

**AT BE CH CY DE DK ES FI FR GB GR IE IT LI LU
MC NL PT SE**

(72) Inventors:

- **BERNAL CAVA, Fulgencio**
30594 Murcia (ES)
- **LIJON GARCIA, Fco. Gabriel**
30594 Murcia (ES)

(30) Priority: **06.08.1998 ES 9802110 U**

(71) Applicant: **Semirec, S.L.**

30594 Murcia (ES)

(74) Representative:

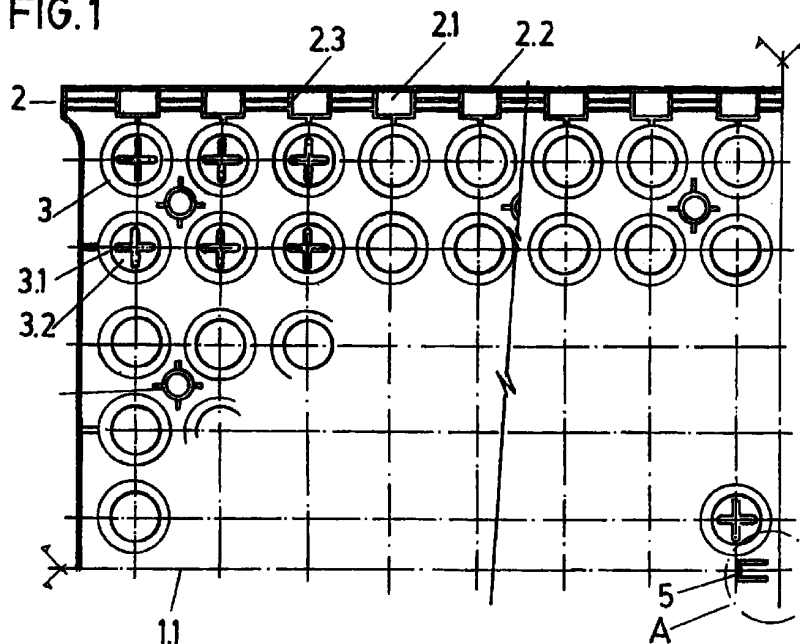
Perez Bonal, Bernardo
Explanada 8
28040 Madrid (ES)

(54) SEED TRAY FOR AUTOMATED GREENHOUSES AND AUTOMATIC TRANSPLANTATION

(57) The invention relates to a tray which includes lateral longitudinal strips (2) provided with a line of rectangular perforations (2.1) of which the major sides are oriented in the same direction as the sheet for driving the tray, and are also provided with orthogonal side stop

platelets (2.2). Small reinforcement protuberances (2.3) for reinforcing the edge of the perforation (2.1) and other intermediary anti-tear perforations (2.4) are provided.

FIG.1



EP 1 029 444 A1

INTERNATIONAL SEARCH REPORT

International application No.

PCT ES/99 00245

A. CLASSIFICATION OF SUBJECT MATTER ⁶:

IPC 6 : A01G 9/10

According to International Patent Classification (IPC) or to both national classification and IPC

B. FIELDS SEARCHED

Minimum documentation searched (classification system followed by classification symbols)

IPC 6 : A01G, A01C, B65D

Documentation searched other than minimum documentation to the extent that such documents are included in the fields searched

Spanish Patents documents and utility models

Electronic data base consulted during the international search (name of data base and, where practicable, search terms used)

EPODOC, WPI, PAJ, ECLA, CIBEPAT

C. DOCUMENTS CONSIDERED TO BE RELEVANT

Category*	Citation of document, with indication, where appropriate, of the relevant passages	Relevant to claim No.
A	US 5274953 A (NICHOLSON), 04 January 1994 (04.01.94), see column 2, lines 22-59, figures.	1
A	WO 9810990 A (WILLIAMES HI-TECH INTERNATIONAL PTY.), 19 March 1998 (19.03.98), see the whole document.	1
A	WO 9403040 A (WILLIAMES HI-TECH INTERNATIONAL PTY.), 17 February 1994 (17.02.94), see page 6, lines 3-13, figures 1a-1c.	1
A	US 4144672 A (GRADWELL et al.), 20 March 1979 (20.03.79), see column 2, line 16-column 3, line 5, column 4, lines 51-61, figures.	2
A	EP 371888 A (BARTHELEMY), 06 June 1990 (06.06.90), see column 3, lines 5-17, figures.	3



Further documents are listed in the continuation of Box C.



See patent family annex.

* Special categories of cited documents:

"A" document defining the general state of the art which is not considered to be of particular relevance

"E" earlier document but published on or after the international filing date

"L" document which may throw doubts on priority claim(s) or which is cited to establish the publication date of another citation or other special reason (as specified)

"O" document referring to an oral disclosure, use, exhibition or other means

"P" document published prior to the international filing date but later than the priority date claimed

"T" later document published after the international filing date or priority date and not in conflict with the application but cited to understand the principle or theory underlying the invention

"X" document of particular relevance; the claimed invention cannot be considered novel or cannot be considered to involve an inventive step when the document is taken alone

"Y" document of particular relevance; the claimed invention cannot be considered to involve an inventive step when the document is combined with one or more other such documents, such combination being obvious to a person skilled in the art

"&" document member of the same patent family

Date of the actual completion of the international search
22 October 1999 (22.10.99)Date of mailing of the international search report
02 November 1999 (02.11.99)

Name and mailing address of the ISA/

S.P.T.O

Facsimile No.

Authorized officer

Telephone No.